



Infront EMC Isilon

Management Pack Guide

MP Version: 2.0.0.53

Published: March 2018

Copyright

©2018 Infront Consulting Group. All rights reserved.

Terms of Use

All management packs should be thoroughly tested before being introduced into a production Operations Manager environment. The authors of this management pack accept no responsibility or liability for negative impact as a result of use of this management pack in your Operations Manager environment.

Contents

EMC Isilon Management Pack Features (Summary).....	5
(i) Document Version	6
(ii) Getting the Latest Management Pack and Documentation	6
(iii) Known Issues in this Release.....	6
(iv) Supported Configurations.....	6
(v) Files in This Management Pack	6
Before importing the Management Pack.....	7
(vi) Pre-requisites	7
(vii) Create a New Management Pack for Customizations	7
Import the Infront EMC Isilon Management Pack.....	7
After importing the Management Pack	7
(viii) Add the SNMP Community String Account	7
(ix) Add the EMC Isilon Account.....	8
(x) Discovering the Isilon Cluster Nodes.....	9
(xi) Licensing the Management Pack	10
Understanding Management Pack Operations	12
(xii) Discoveries	12
(xiii) Monitors.....	13
(xiv) Rules.....	14
(xv) Tasks.....	16
(xvi) Views	17
(xvii) Quick Monitoring Test	21

EMC Isilon Management Pack Features (Summary)

Infront EMC Isilon Management Pack is featuring discovery and monitoring for EMC Isilon OneFS NAS cluster components:

Discoveries

- Isilon OneFS Cluster
- Isilon OneFS Cluster Node
- Memory (RAM and NVRAM)
- Processors
- InfiniBand Adapters
- Disk Controllers
- Power Supplies
- Disks
- Shares

Monitoring

- Disk Health
- Share Health
- Cluster Node Health
- Cluster Health
- Cluster Node Events (warning, critical, emergency)
- Cluster Node Jobs
- Web Interfaces Availability
- Cluster Node Capacity below threshold
- Cluster Node Performance Counters collection
 - o Processor Used (%)
 - o Capacity Available (%)
 - o Capacity Used (%)
 - o Capacity Total
 - o DiskIn (Ops/s)
 - o DiskOut (Ops/s)
 - o NetIn (Pkt/s)
 - o NetOut (Pkt/s)
 - o File Share Protocol Total (Ops/s)
 - o File Share Protocol (SMB, HTTP, FTP, NFS, ISCSI, HDFS) (Ops/s)
- Disk Performance Counters collection
 - o Busy (%)
 - o BytesIn (B/s)
 - o BytesOut (B/s)
 - o Inodes
 - o OpsIn (N/s)
 - o OpsOut (N/s)
 - o Queued
 - o SizeIn (B)
 - o SizeOut (B)
 - o Slow (N/s)
 - o TimeAvg (ms)
 - o TimeInQ (ms)
 - o Used (%)
- Tasks

- List Events (using local DB) per Cluster Node V7
- List Events (using master DB) per Cluster Node V7
- List Events per Cluster Node V8
- List Running Jobs per Cluster Node
- List Failed Jobs per Cluster Node
- Show All HW Monitored Items Status
- View Storage Pools

Document Version

This guide was written based on version 2.0.0.53 of the **Infront EMC Isilon** Management Pack.

Revision History

Release Date	Changes
September 2017	MP Version 2.0.0.41
September 2018	MP Version 2.0.0.45
March 2018	MP Version 2.0.0.53
June 2018	Added New Pre-Requisites for MP Version 2.0.0.53

Getting the Latest Management Pack and Documentation

You can find the **Infront EMC Isilon** Management Pack at <http://www.infrontconsulting.com/software.php>.

Known Issues in this Release

There are no known issues with the **Infront EMC Isilon** Management Pack.

Supported Configurations

The **Infront EMC Isilon** Management Pack is designed and tested to work with:

- System Center Operations Manager 2012 SP1 or R2;
- Isilon OneFS 7.0 or later;
- SNMP v1/2 and V3 for discovering Isilon OneFS Cluster Nodes

Files in This Management Pack

The **Infront EMC Isilon** Management Pack consists of the following files:

File	Version	Description
EMCIsilonMP.msi	2.0.0.53	The downloadable installer
EMC.Isilon.mp	2.0.0.53	The sealed management pack file (installed by the msi)
EMCIsilonMP.pdf	2.0.0.53	Management Pack documentation (installed by the msi)

Before importing the Management Pack

Pre-Requisites

You must update the following Modules and PowerShell Version:

1. PowerShell Version 5.1.14409.1012
<https://www.microsoft.com/en-us/download/details.aspx?id=54616>
Download the file: Win8.1AndW2K12R2-KB3191564-x64.msu
2. Install NuGet Minimum Version 2.8.5.210

```
Install-PackageProvider -Name NuGet -MinimumVersion 2.8.5.201 -Confirm:$False -Force -Scope AllUsers
```

3. Install Posh-SSH Minimum Version 2.0.2

```
Install-Module Posh-SSH -Scope AllUsers -Confirm:$False -Force
```

4. Install PowerShellGet 2.0.0

```
Install-Module -Name PowerShellGet -MinimumVersion 2.0.2 -Confirm:$False -Force -Scope AllUsers
```

Create a New Management Pack for Customizations

The **Infront EMC Isilon** Management Pack is sealed. None of the original settings in the management pack file can be changed. However, customizations, such as overrides or new monitoring objects, may be created by saving them to a different management pack (suggested MP name: Infront.EMC.Isilon.Overrides)

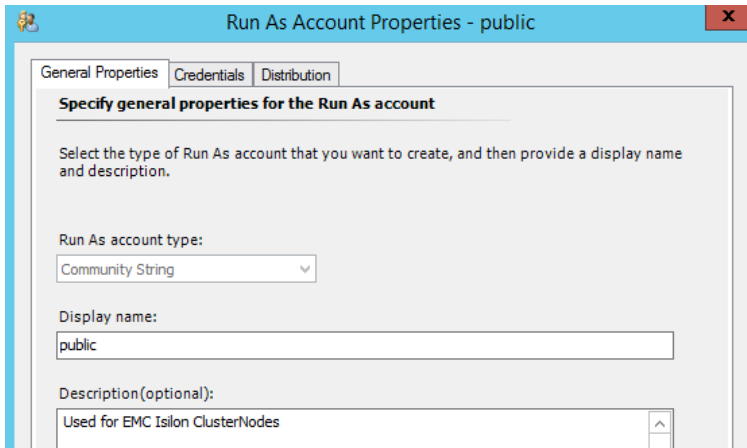
Import the Infront EMC Isilon Management Pack

Execute the Management Pack Installer and then follow the normal procedure to import the **Infront EMC Isilon** Management Pack.

After importing the Management Pack

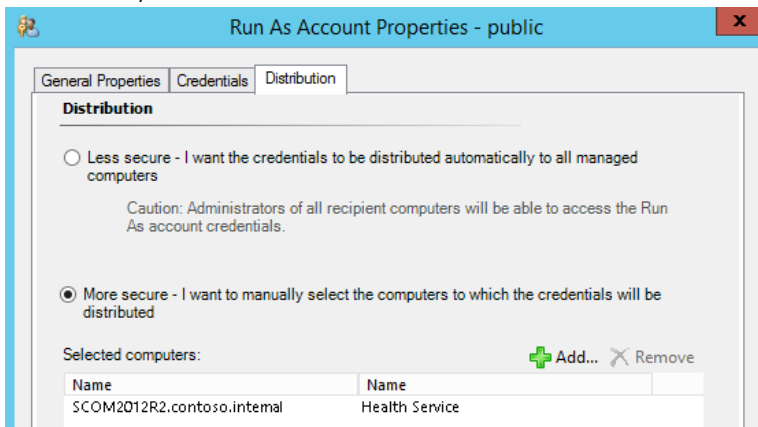
Add the SNMP Community String Account

1. In the **SCOM Console**, click on the **Administration tab**
2. Create a **Community String account** to be used by the Management Pack SNMP workflows (example below)

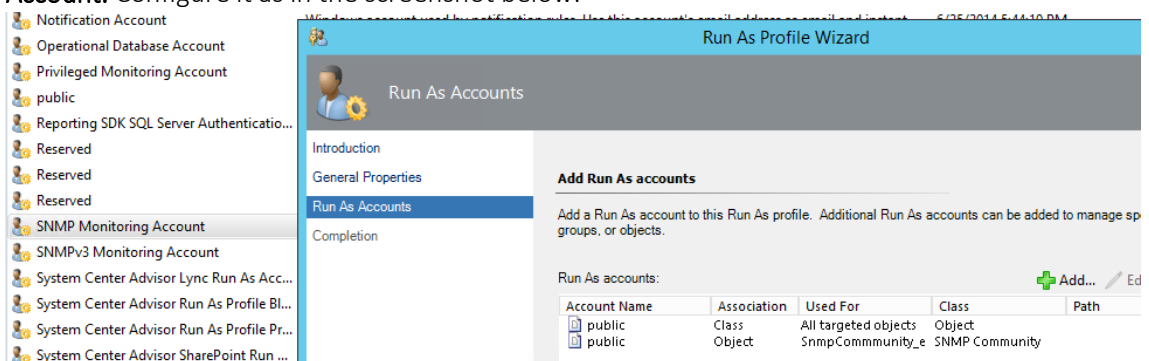


Note. Credentials must match the accepted community name in the SNMP configuration of the EMC Isilon ClusterNodes.

3. Make sure you distribute the account to the HealthService on the Management Servers.

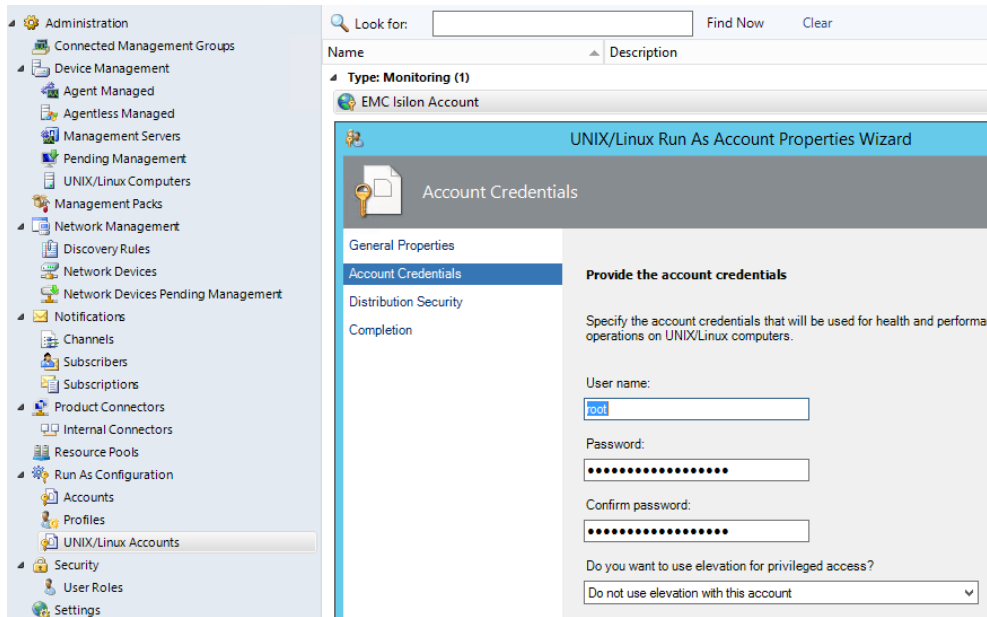


4. Add the account to the Run As Profile
Click on "Profiles" under "Run As Configuration" and locate the **SNMP Monitoring Account**. Configure it as in the screenshot below:

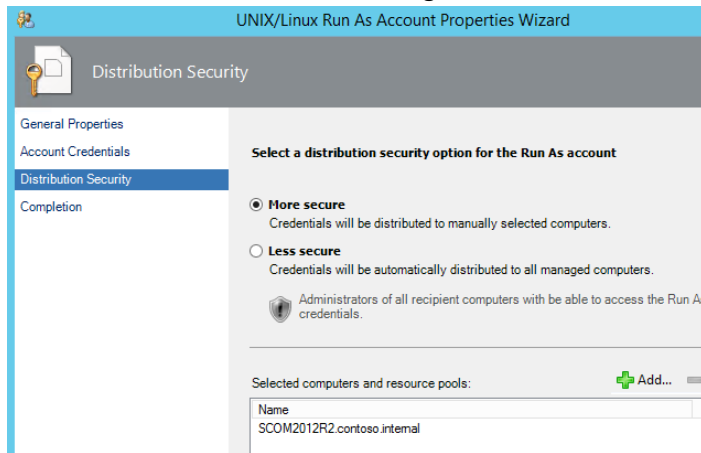


Add the EMC Isilon Account

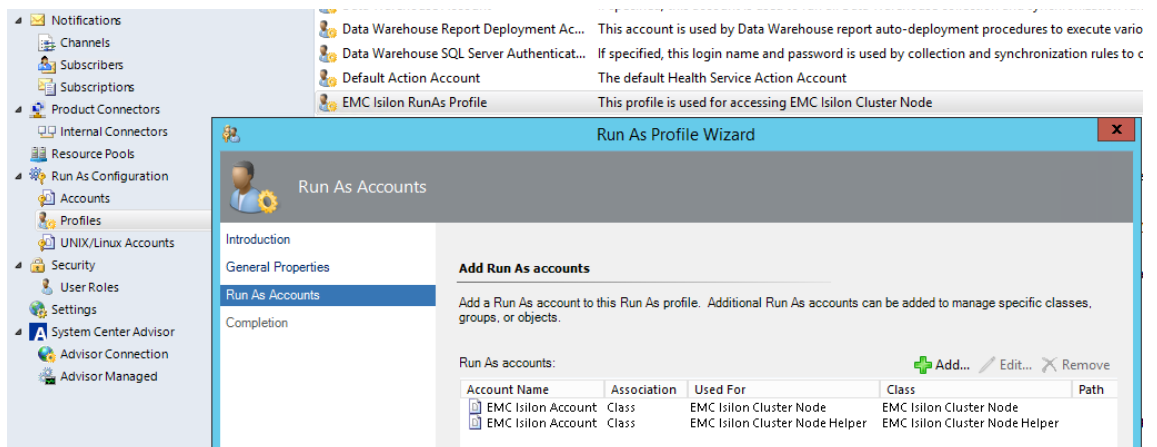
1. In the **SCOM Console**, click on the **Administration tab**
2. Under **Run As Configuration, UNIX/Linux Accounts** create a monitoring account that matches the credentials to access the **OneFS CLI**.



3. Distribute the account to the Management Servers.

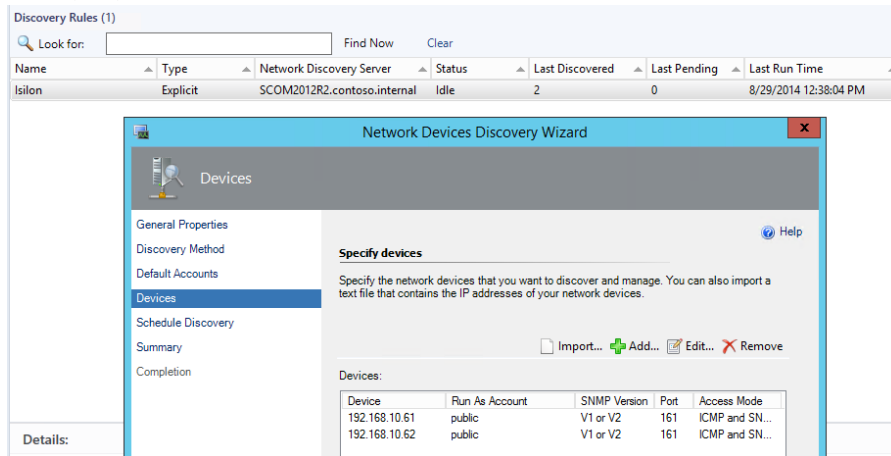


4. Associate the account with the EMC Isilon RunAs Profile.

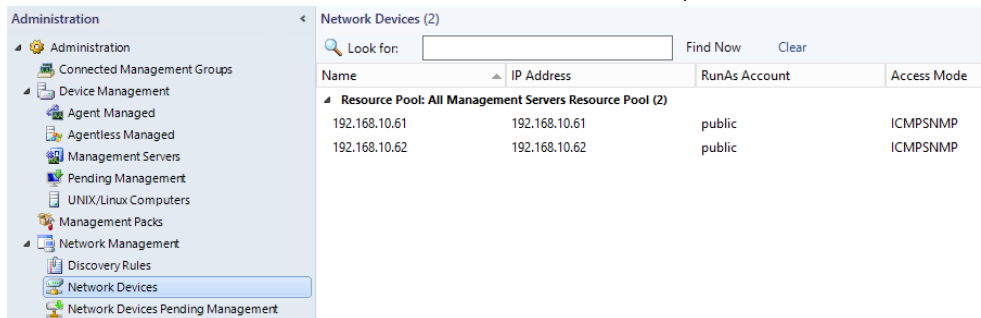


Discovering the Isilon Cluster Nodes

1. In the SCOM OpsMgr Console, click on the **Administration / Network Management / Discovery Rules**
2. Enter a new or edit an existing discovery rule to discover the Isilon Cluster Nodes; example provided below:



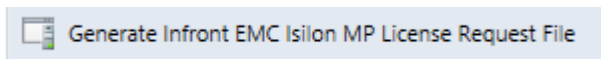
3. Save and run the discovery.
4. Check that the Isilon Cluster Nodes have been successfully discovered



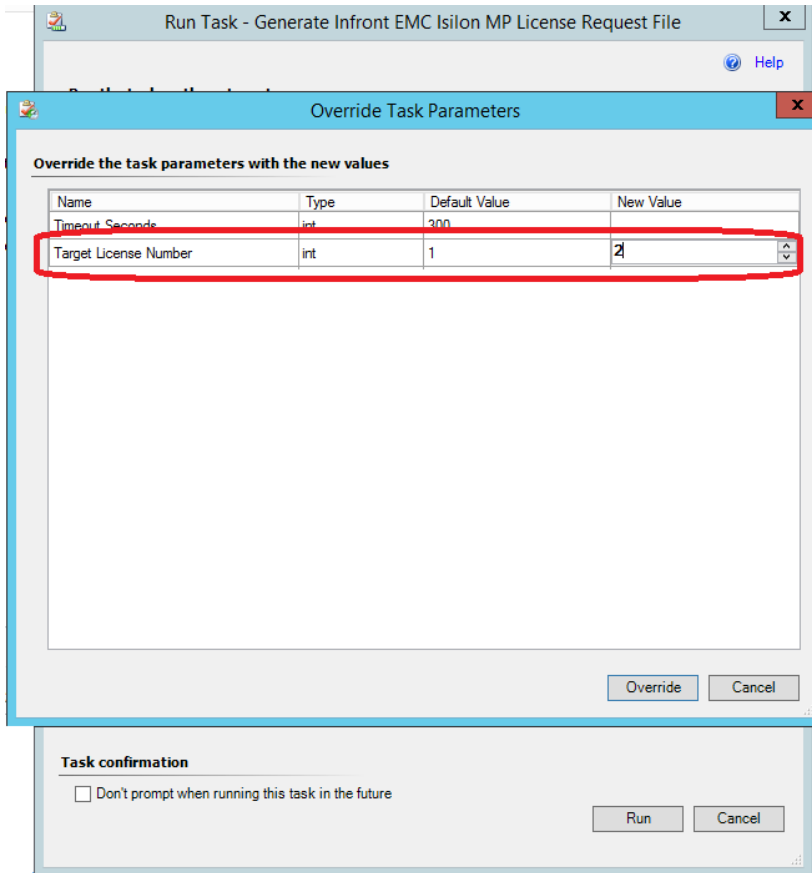
Licensing the Management Pack

In this version of the Management Pack there is a new console task available from the Network Library Nodes entities, you can choose it going to the Discovery Inventory and changing the target type to "Node" from the Network Library MP, to be executed.

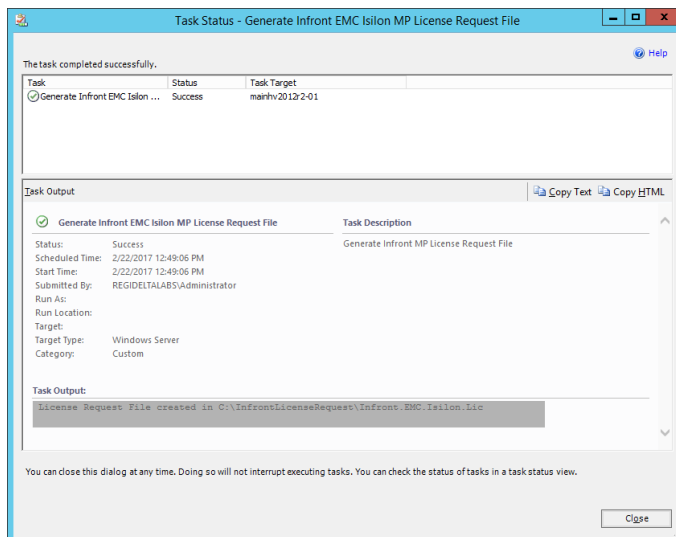
NOTE: If you already got the license key you don't need to run this task



- Overwrite it with the number of target license to be used (Number of Clusters)

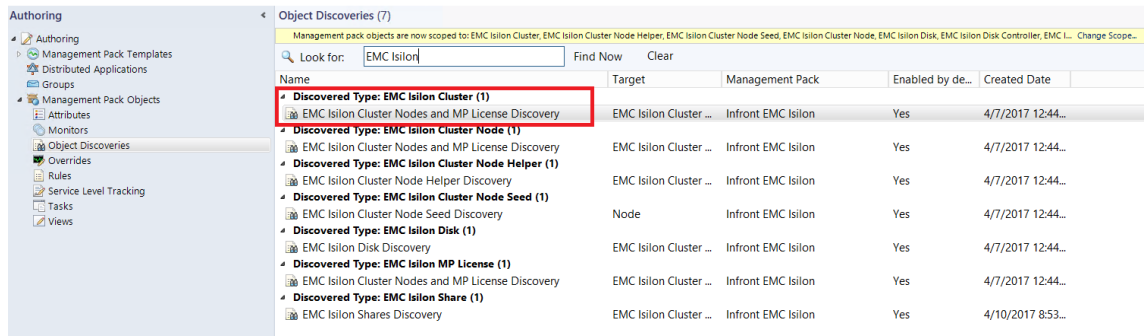


- The task output will show you the location of the request license file.

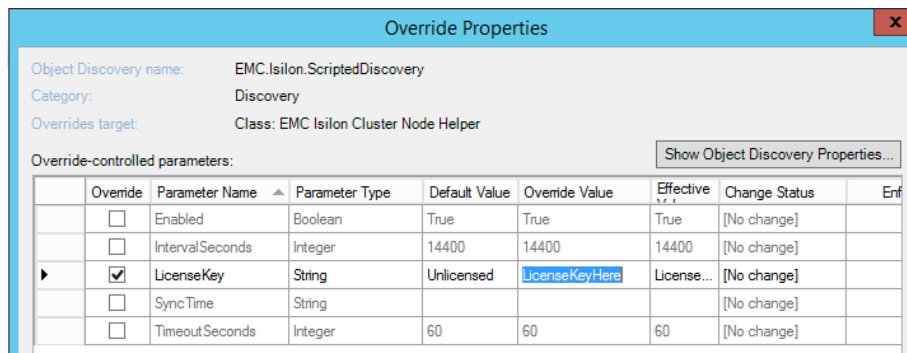


- Send us this file to provide the License Key to enter as follows:

1. In the **SCOM OpsMgr Console**, click on the **Authoring / Object Discoveries**
2. Select Scope and enter **EMC Isilon** in the "Look for:"



3. Select the **EMC Isilon Cluster Nodes and MP License Discovery** discovery
4. Override for all objects of class: **EMC Isilon ClusterNode Helper**
5. Enter the license key and save the override in **EMC.Isilon.Overrides** MP (suggested).



Understanding Management Pack Operations

Discoveries

Here are the classes defined and discovered by **Infront EMC Isilon** MP.

Select Items to Target

Select the class, group, or object that you want to target from the list below to make items easier to find.

Look for:

View common targets
 View all targets

Target	Management Pack
EMC Isilon Cluster	EMC.Isilon
EMC Isilon Cluster Node	EMC.Isilon
EMC Isilon Disk	EMC.Isilon
EMC Isilon Disk Controller	EMC.Isilon
EMC Isilon InfiniBand Adapter	EMC.Isilon
EMC Isilon Memory (NVRAM)	EMC.Isilon
EMC Isilon Memory (RAM)	EMC.Isilon
EMC Isilon Network Adapter	EMC.Isilon
EMC Isilon PowerSupply	EMC.Isilon
EMC Isilon Processor	EMC.Isilon

Monitors

Here is the list of the monitors defined by the **Infront EMC Isilon MP**:

Monitor	Target	Description
EMC Isilon Disk Availability Monitor	EMC Isilon Disk	Checks the disk status for a state other than HEALTHY
EMC Isilon Power Supply Availability Monitor	EMC Isilon Power Supply	Checks the state of the power supplies
EMC Isilon Node Capacity Available Less Than Threshold Monitor	EMC Isilon Cluster Node	Checks the cluster node available capacity falling below configurable threshold (default 10%)
EMC Isilon Node Events Monitor	EMC Isilon Cluster Node	Checks for new events (warning, critical, emergency) that are raised in the last probing interval (10 min interval)
EMC Isilon V8 Disk Availability Monitor	EMC Isilon Disk	Checks the disk status for a state other than HEALTHY using V8 isi commands

EMC Isilon V8 Node Events Monitor	EMC Isilon Cluster Node	Checks for new events (warning, critical, emergency) that are not resolved using V8 isi commands
EMC Isilon V8 Cluster Health Monitor	EMC Isilon Cluster	Checks the cluster status using V8 commands
EMC Isilon Share Availability Monitor	EMC Isilon Share	Checks the share availability
EMC Isilon OneFS Web Administration Interface Monitor	EMC Isilon Cluster Node	This monitor checks the availability of the EMC Isilon OneFS Web Administration Interface by doing a simple http(s) ping of the Web Console

Rollup and Aggregate monitors are also defined to complete the distributed application health model.

Rules

Here is the list of the rules defined by the **Infront EMC Isilon** MP (description is not included as it is self-explanatory):

Rule Name	Rule Type	Target
EMC Isilon Node CPU %Used Collection Rule	Performance	EMC Isilon Cluster Node
EMC Isilon Node SMB Ops Collection Rule	Performance	EMC Isilon Cluster Node
EMC Isilon Node FTP Ops Collection Rule	Performance	EMC Isilon Cluster Node
EMC Isilon Node HTTP Ops Collection Rule	Performance	EMC Isilon Cluster Node
EMC Isilon Node ISCSI Ops Collection Rule	Performance	EMC Isilon Cluster Node
EMC Isilon Node NFS Ops Collection Rule	Performance	EMC Isilon Cluster Node
EMC Isilon Node HDFS Ops Collection Rule	Performance	EMC Isilon Cluster Node
EMC Isilon Node Total Ops Collection Rule	Performance	EMC Isilon Cluster Node
EMC Isilon Node NetIn Pkt Collection Rule	Performance	EMC Isilon Cluster Node
EMC Isilon Node NetOut Pkt Collection Rule	Performance	EMC Isilon Cluster Node

EMC Isilon Node DiskIn Ops Collection Rule	Performance	EMC Isilon Cluster Node
EMC Isilon Node DiskOut Ops Collection Rule	Performance	EMC Isilon Cluster Node
EMC Isilon Node Capacity Total Size Collection Rule	Performance	EMC Isilon Cluster Node
EMC Isilon Node Capacity Available Collection Rule	Performance	EMC Isilon Cluster Node
EMC Isilon Node Capacity Used Collection Rule	Performance	EMC Isilon Cluster Node
EMC Isilon Disk OpsIn Collection Rule	Performance	EMC Isilon Disk
EMC Isilon Disk BytesIn Collection Rule	Performance	EMC Isilon Disk
EMC Isilon Disk SizeIn Collection Rule	Performance	EMC Isilon Disk
EMC Isilon Disk OpsOut Collection Rule	Performance	EMC Isilon Disk
EMC Isilon Disk BytesOut Collection Rule	Performance	EMC Isilon Disk
EMC Isilon Disk SizeOut Collection Rule	Performance	EMC Isilon Disk
EMC Isilon Disk TimeAvg Collection Rule	Performance	EMC Isilon Disk
EMC Isilon Disk Slow Collection Rule	Performance	EMC Isilon Disk
EMC Isilon Disk TimeInQ Collection Rule	Performance	EMC Isilon Disk
EMC Isilon Disk Queued Collection Rule	Performance	EMC Isilon Disk
EMC Isilon Disk Busy Collection Rule	Performance	EMC Isilon Disk
EMC Isilon Disk Used Collection Rule	Performance	EMC Isilon Disk
EMC Isilon Disk Inodes Collection Rule	Performance	EMC Isilon Disk
EMC Isilon New Critical Events Alert Rule	Alert	EMC Isilon Cluster Node
EMC Isilon New Warning Events Alert Rule	Alert	EMC Isilon Cluster Node
EMC Isilon V8 New Critical Events Alert Rule	Alert	EMC Isilon Cluster Node
EMC Isilon V8 New Warning Events Alert Rule	Alert	EMC Isilon Cluster Node
EMC Isilon V8 Node CPU %Used Collection Rule	Performance	EMC Isilon Cluster Node
EMC Isilon V8 Node SMB Ops Collection Rule	Performance	EMC Isilon Cluster Node
EMC Isilon V8 Node FTP Ops Collection Rule	Performance	EMC Isilon Cluster Node
EMC Isilon V8 Node HTTP Ops Collection Rule	Performance	EMC Isilon Cluster Node
EMC Isilon V8 Node ISCSI Ops Collection Rule	Performance	EMC Isilon Cluster Node

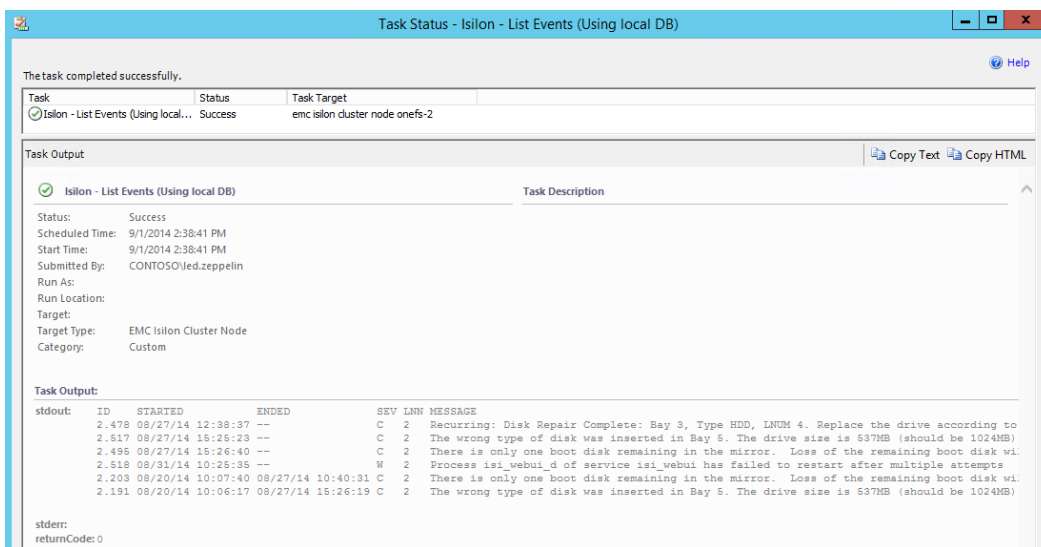
EMC Isilon V8 Node NFS Ops Collection Rule	Performance	EMC Isilon Cluster Node
EMC Isilon V8 Node HDFS Ops Collection Rule	Performance	EMC Isilon Cluster Node
EMC Isilon V8 Node Total Ops Collection Rule	Performance	EMC Isilon Cluster Node
EMC Isilon V8 Node NetIn Pkt Collection Rule	Performance	EMC Isilon Cluster Node
EMC Isilon V8 Node NetOut Pkt Collection Rule	Performance	EMC Isilon Cluster Node
EMC Isilon V8 Node DiskIn Ops Collection Rule	Performance	EMC Isilon Cluster Node
EMC Isilon V8 Node DiskOut Ops Collection Rule	Performance	EMC Isilon Cluster Node
EMC Isilon V8 Node Capacity Total Size Collection Rule	Performance	EMC Isilon Cluster Node
EMC Isilon V8 Node Capacity Available Collection Rule	Performance	EMC Isilon Cluster Node
EMC Isilon V8 Node Capacity Used Collection Rule	Performance	EMC Isilon Cluster Node
EMC Isilon V8 Disk OpsIn Collection Rule	Performance	EMC Isilon Disk
EMC Isilon V8 Disk BytesIn Collection Rule	Performance	EMC Isilon Disk
EMC Isilon V8 Disk SizeIn Collection Rule	Performance	EMC Isilon Disk
EMC Isilon V8 Disk OpsOut Collection Rule	Performance	EMC Isilon Disk
EMC Isilon V8 Disk BytesOut Collection Rule	Performance	EMC Isilon Disk
EMC Isilon V8 Disk SizeOut Collection Rule	Performance	EMC Isilon Disk
EMC Isilon V8 Disk TimeAvg Collection Rule	Performance	EMC Isilon Disk
EMC Isilon V8 Disk Slow Collection Rule	Performance	EMC Isilon Disk
EMC Isilon V8 Disk TimeInQ Collection Rule	Performance	EMC Isilon Disk
EMC Isilon V8 Disk Queued Collection Rule	Performance	EMC Isilon Disk
EMC Isilon V8 Disk Busy Collection Rule	Performance	EMC Isilon Disk
EMC Isilon V8 Disk Used Collection Rule	Performance	EMC Isilon Disk
EMC Isilon V8 Disk Inodes Collection Rule	Performance	EMC Isilon Disk

Tasks

By selecting one of the **EMC Isilon Cluster Node** objects you have the option to execute the following tasks:

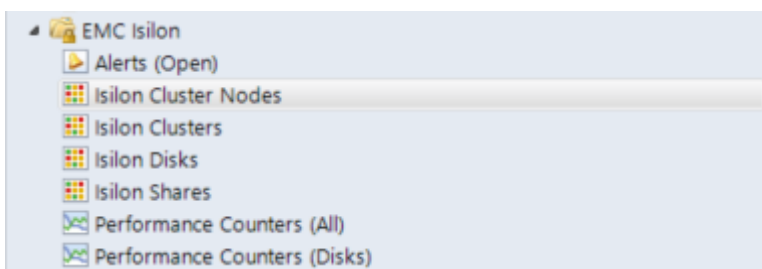


For example here is the task output if executing "Isilon - List Events (Using local DB)":



Views

The following views are made available by the Infront EMC Isilon MP:



Alerts View

Monitoring

Alerts (Open) (5)

Look for: Find Now Clear

Icon	Source	Name	Resolution State	Created	Age
	EMC Isilon Cluster Node OneFS-1	EMC Isilon Cluster Has Raised New Critical Events	New	9/1/2014 2:23:08 PM	16 Minutes
	EMC Isilon Cluster Node OneFS-2	EMC Isilon Cluster Has Raised New Critical Events	New	9/1/2014 1:43:10 PM	56 Minutes
	EMC Isilon Cluster Node OneFS-1	EMC Isilon Cluster Has Raised New Critical Events	New	9/1/2014 1:43:10 PM	56 Minutes
	EMC Isilon Cluster Node OneFS-2	EMC Isilon Cluster Has Raised New Critical Events	New	9/1/2014 1:00:54 PM	1 Hour, 38 Min...
	EMC Isilon Cluster Node OneFS-1	EMC Isilon Cluster Has Raised New Critical Events	New	9/1/2014 1:00:54 PM	1 Hour, 38 Min...

Isilon Cluster(s) Status

Isilon Clusters (1)

Look for: Find Now Clear

State	Mainten...	Name	Path
		EMC Isilon Cluster	

Detail View

EMC Isilon Cluster properties of EMC Isilon Cluster

Display Name	EMC Isilon Cluster
Full Path Name	EMC Isilon Cluster
Cluster GUID	000c29e7564604cc0058600f7ff68f19893
Cluster Name	ISClust01

Isilon Cluster Nodes Status

Isilon Cluster Nodes (3)

Look for: Find Now Clear

State	Mainten...	Name	Path	Location	Model	Node ID	Node Name
		10.1.10.115		unset	iPrism	1	ISClust01-1
		10.1.10.116		unset	iPrism	2	ISClust01-2
		10.1.10.117		unset	iPrism	3	ISClust01-3

Detail View

EMC Isilon Cluster Node properties of 10.1.10.115

Display Name	10.1.10.115
Full Path Name	10.1.10.115
Access Mode	ICMPSNMP
Certification	CERTIFIED
Description	ISClust01-1 1357104928 Isilon OneFS v8.0.0.1
Device Key	00-0C-29-E7-56-46
Location	unset
Model	iPrism
Port Number	161
Primary Owner Contact	unset@unset.invalid
Primary Owner Name	
Virtual Community Suffix	
SNMP Agent Address	10.1.10.115
SNMP Version	2
Supports SNMP	True
MIB2 System Name	ISClust01-1
System Object ID	.1.3.6.1.4.1.12325.1.1.2.1.1
Vendor	STBERNARD
Node ID	1
Node Name	ISClust01-1
Cluster Name	ISClust01
Cluster GUID	000c29e7564604cc0058600f7ff68f19893
Series	
Product	V200-2U-Dual-2048MB-2x1GE-24GB
HWGen	VMware (VMware Hardware)
Chassis	VMW (VMware 60-Bay Chassis)
Serial Number	SV200-000ZZ-WYMO
Motherboard	VMware (VMware Virtual Motherboard)
IMB	Board Version 0xffffffff

Isilon Disks Status

Isilon Dsks (21)

Look for: Find Now Clear

State	Mainten...	Name	Path	Bay	Model	Firmware	Serial Num...	Type
Healthy		EMC Isilon Disk	00-0C-29-0...	Bay 4	VMware, V...	1.0		SAS HDD
Healthy		EMC Isilon Disk	00-0C-29-E...	Bay 6	VMware, V...	1.0		SAS HDD
Healthy		EMC Isilon Disk	00-0C-29-B...	Bay 5	VMware, V...	1.0		SAS HDD
Healthy		EMC Isilon Disk	00-0C-29-E...	Bay 3	VMware, V...	1.0		SAS HDD
Healthy		EMC Isilon Disk	00-0C-29-0...	Bay 5	VMware, V...	1.0		SAS HDD
Healthy		EMC Isilon Disk	00-0C-29-E...	Bay 4	VMware, V...	1.0		SAS HDD
Healthy		EMC Isilon Disk	00-0C-29-0...	Bay 6	VMware, V...	1.0		SAS HDD
Healthy		EMC Isilon Disk	00-0C-29-E...	Bay 7	VMware, V...	1.0		SAS HDD
Healthy		EMC Isilon Disk	00-0C-29-E...	Bay 2	VMware, V...	1.0		SAS HDD
Healthy		EMC Isilon Disk	00-0C-29-B...	Bay 3	VMware, V...	1.0		SAS HDD
Healthy		EMC Isilon Disk	00-0C-29-B...	Bay 4	VMware, V...	1.0		SAS HDD
Healthy		EMC Isilon Disk	00-0C-29-0...	Bay 3	VMware, V...	1.0		SAS HDD
Healthy		EMC Isilon Disk	00-0C-29-B...	Bay 2	VMware, V...	1.0		SAS HDD
Healthy		EMC Isilon Disk	00-0C-29-E...	Bay 5	VMware, V...	1.0		SAS HDD
Healthy		EMC Isilon Disk	00-0C-29-B...	Bay 6	VMware, V...	1.0		SAS HDD
Healthy		EMC Isilon Disk	00-0C-29-0...	Bay 2	VMware, V...	1.0		SAS HDD
Healthy		EMC Isilon Disk	00-0C-29-B...	Bay 7	VMware, V...	1.0		SAS HDD
Healthy		EMC Isilon Disk	00-0C-29-0...	Bay 7	VMware, V...	1.0		SAS HDD
Healthy		EMC Isilon Disk	00-0C-29-0...	Bay 1	VMware, V...	1.0		SAS SSD
Healthy		EMC Isilon Disk	00-0C-29-B...	Bay 1	VMware, V...	1.0		SAS SSD
Healthy		EMC Isilon Disk	00-0C-29-E...	Bay 1	VMware, V...	1.0		SAS SSD

Detail View

EMC Isilon Disk properties of EMC Isilon Disk

Display Name	EMC Isilon Disk
Full Path Name	10.1.10.117:EMC Isilon Disk
Description	EMC Isilon Disk
Index	Bay 4
Logical Device Key	Bay 4
Access	
Capacity	
Media	
Removable	
Bay	Bay 4
Model	VMware, VMware Virtual 5
Firmware	1.0
Serial Number	
Type	SAS HDD

Isilon Shares Status

Isilon Shares (3)

Look for: Find Now Clear

State	Mainten...	Name	Path	Display Name	Share Name	Share Path	Node Name
Healthy		EMC Isilon Share	00-0C-29-0...	EMC Isilon Share	ifs	\\10.1.10.117/ifs	10.1.10.117
Healthy		EMC Isilon Share	00-0C-29-B...	EMC Isilon Share	ifs	\\10.1.10.116/ifs	10.1.10.116
Healthy		EMC Isilon Share	00-0C-29-E...	EMC Isilon Share	ifs	\\10.1.10.115/ifs	10.1.10.115

Detail View

EMC Isilon Share properties of EMC Isilon Share

Display Name	EMC Isilon Share
Full Path Name	10.1.10.117:EMC Isilon Share
Description	EMC Isilon Share
Index	
Logical Device Key	10.1.10.117-ifs
Share Name	ifs
Share Path	\\10.1.10.117/ifs
Node Name	10.1.10.117

Isilon Cluster Diagram

By selecting one of the Isilon Clusters and then Diagram View:

Isilon Clusters (1)

Look for: Find Now Clear

State	Mainten...	Name	Path	Cluster GUID
Critical		EMC Isilon Cluster		000c29405c0676a563534919045044d45087

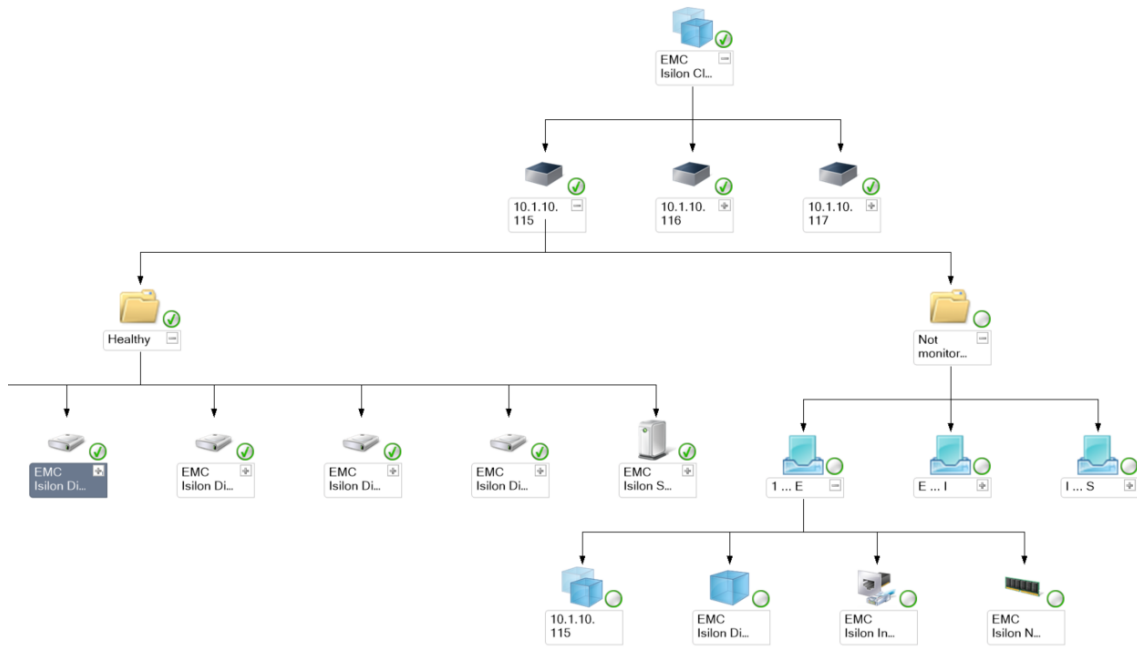
- Open
- Maintenance Mode
- Refresh F5
- Personalize view...
- Properties
- Alert View
- Diagram View
- Event View
- Performance View
- State View
- Health Explorer for EMC Isilon Cluster
- Operations Manager Shell...

Detail View

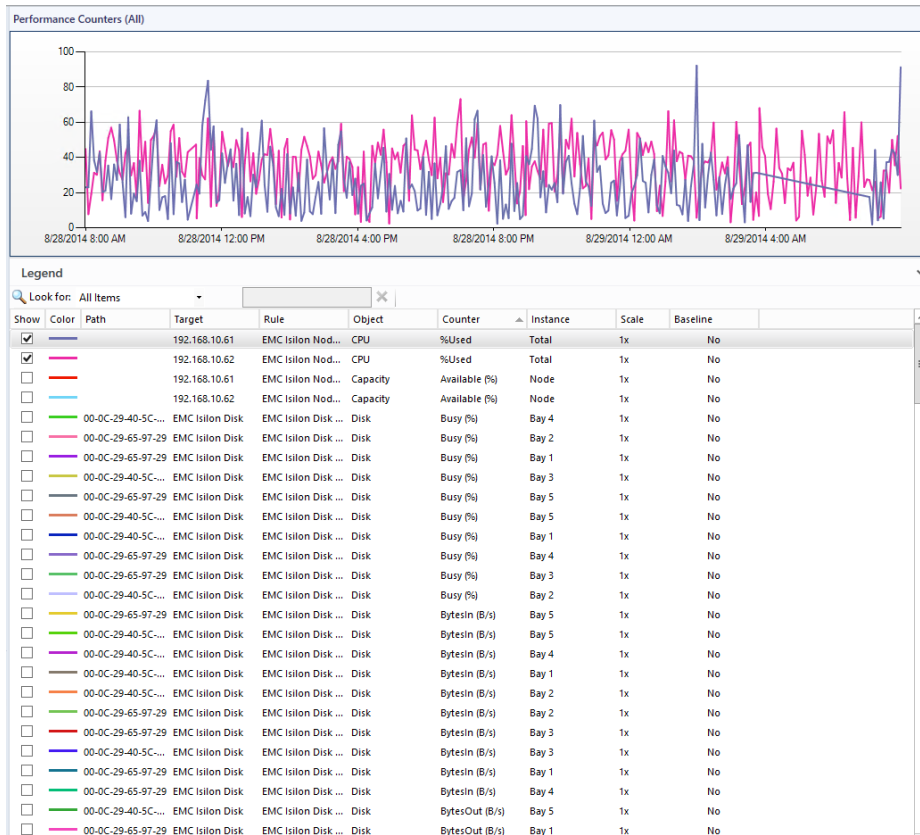
EMC Isilon Cluster properties of EMC Isilon Cluster

Display Name	EMC Isilon Cluster
Full Path Name	EMC Isilon Cluster
Cluster GUID	000c29405c0676a563534919045044d45087
Cluster Name	OneFS

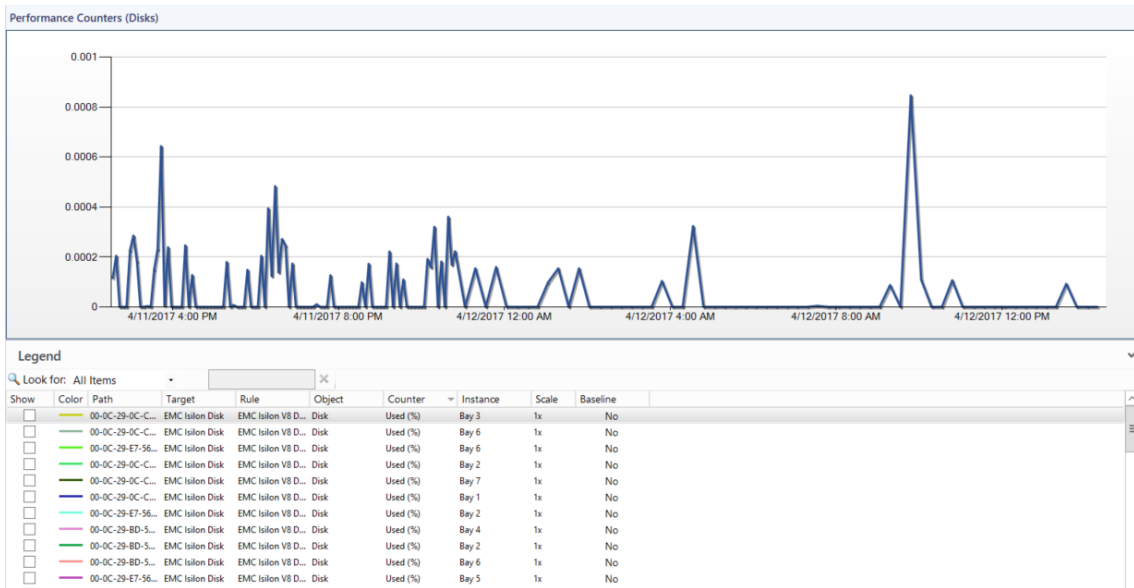
Isilon Cluster Diagram



Performance Counters (All)



Performance Counters (Disks)



Quick Monitoring Test

On a monitored Isilon Cluster Node issue the following command:

```

192.168.10.62 - PuTTY
OneFS-2# isi events sendtest -w
Send test event, instance ID = 2,552
Waiting for existence in master database
  Attempting to get a query object: Success.
  Looking for instance_id 2,552: Failed. Retry #1
  Looking for instance_id 2,552: Success.
Event arrived in 7.713159 seconds
OneFS-2#
  
```

In the next few minutes, alert will be triggered:

Alert Properties

General | Product Knowledge | Company Knowledge | History | Alert Context | Custom Fields

EMC Isilon Cluster Has Raised New Critical Events

Key Details:

- Alert source: EMC Isilon Cluster Node OneFS-1
- Severity: Critical
- Priority: Medium
- Age: < 1 Minute
- Repeat Count: 0
- TFS Work Item ID:
- TFS Work Item Owner:
- Owner:
- Ticket ID:

Alert Description:

```

ID STARTED ENDED SEV LNN MESSAGE
1.316 09/01 17:39 09/01 17:39 C All Test event sent from CLI
1.318 09/01 17:39 09/01 17:39 C All Test event sent from CLI
1.320 09/01 17:40 09/01 17:40 C All Test event sent from CLI
1.326 09/01 17:41 09/01 17:41 C All Test event sent from CLI
  
```